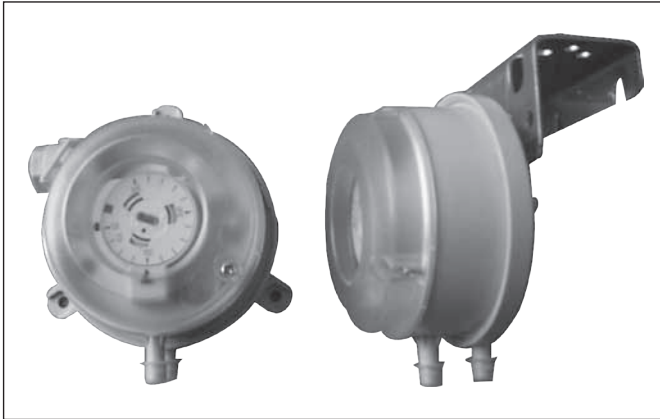


Pressure/Differential Pressure

609 Adjustable Air Differential Pressure Switch



Applications

Air and other non-combustible, non-aggressive gases
Monitor overpressure, vacuum and differential pressure for air and compatible gases
Possible applications are:
monitor air filters and ventilators
monitor air status in heating and cooling circuits
monitor flows in ventilation duct
other applications

Specifications

Adjustable range: 5 ranges selectable, different engineering units available, see order information

Pressure limit: 7500Pa

Working temperature limit: -20~ 85°C

Storage temperature limit: -40~85°C

Pressure connection: ϕ 6.0mm plastic pipe, P1 high and P2 low pressure

Service life: over 106 switching cycles

Electric Contact: SPDT, max 2A/250VAC, max frequency 6 switching cycles/min

Electrical connection: 3 screw terminals

Repeatability: $\pm 2\%$

Materials: housing PC, cover PC, diaphragm silicone and contact silver

Weight: 140g with bracket, 90g without bracket

Protection: IP54 with cover

Installation: vertical, pressure ports P1 and P2 downward. This is the factory-calibrated position. If horizontally installation needed, the switching value should plus about 20pa (cover upward) and minus about 10pa (cover downward). See operation manual.

Accessory: the pressure connection set (part number 1001) includes plastic pipe 2m, 2 pressure connection parts and 4 screws.

Accessories

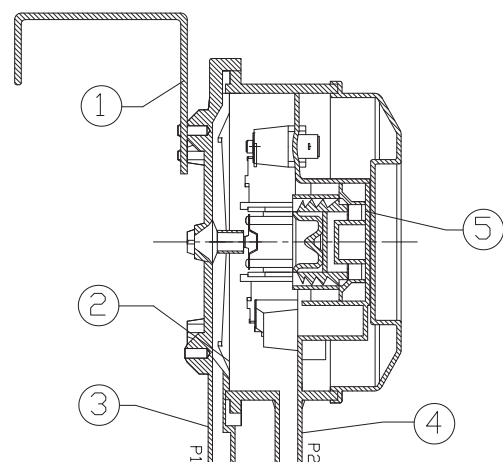


Part number: 1001

Structure

- 1 Bracket for installation
- 2 Diaphragm
- 3 P1 high pressure or low vacuum
- 4 P2 low pressure or high vacuum
- 5 Scale dial (switching point setting)

Remark: it is for the one with bracket. Another style with installation ear is on product picture. The 2 styles are for different applications. Their structures are the same.



Pressure/Differential Pressure

Models

	609.	X	X	X	Scales for different units		
Enclosure	With install ear	0					
	No ear, with bracket	1			mbar	inch wc	mm wc
Adjustable range	20-300Pa		0		0.2-3	0.08-1.2	2-30
	50-500Pa		1		0.5-5	0.2-2	5-50
	100-1000Pa		2		1-10	0.4-4	10-100
	0.5-2.5KPa		3		5-25	2-10	50-250
	1-5KPa		4		10-50	4-20	100-500
Engineering unit	Pa			6			
	mbar			7			
	inch wc			8			
	mm wc			9			

Dead Band Information

Part No.	Range	DB
609.X0X	20-300Pa	10Pa
609.X1X	50-500Pa	20Pa
609.X2X	100-1000Pa	20Pa
609.X3X	0.5-2.5KPa	30Pa
609.X4X	1-5KPa	100Pa

Re: the DB is factory setted.

Dimension(mm)

